



30 March 2023

Resource estimate for Far East Block discovery underway; results from 23 UG2 intersections average 9.28g/t (6PGE+Au)

Highlights:

- All assay results for drilling completed to-date at the Bengwenyama project have been received.
- Assay results for 23 UG2 intersections have returned an average 3PGE+Au grade of 7.67g/t and 6PGE+Au of 9.28g/t over 72cm, which continues to confirm the JORC-2012 Inferred Mineral Resource estimate.
- With additional assays for the Merensky Reef (MR), the MR now averages a 3PGE+Au grade of 2.45 g/t and 6PGE+Au grade of 2.72 g/t over a width of 195 cm.
- Resource estimate underway for new UG2 discovery, the Far East Block (FEB).
- Average depth below surface of 217m makes the FEB potentially accessible from a planned decline
- Drilling has re-commenced following a temporary suspension in early March.
- Continuation of Phase 1, 63-hole drill programme targeting upgrade for a portion of existing Inferred 18.8Moz (4E) resource to Indicated status, ahead of planned Pre-Feasibility Study .

Southern Palladium (ASX:SPD and JSE:SDL), 'Southern Palladium' or 'the Company' is pleased to announce assay results for the entirety of the drill programme completed to-date across the MR and UG2 reefs at the Bengwenyama Platinum Group Metal (PGM) project, located on the Eastern Limb of the world class Bushveld Complex, South Africa.

Managing Director Johan Odendaal, said: *"The latest drilling results continue to confirm the consistency of the grade and continuity of the UG2 reef, and both the grade and reef width correlates well with the compliant Inferred Mineral Resource. Latest assays from the four intersections in the Far East Block also show consistent results and this area has significant potential for future resource upgrades. The geological and estimation model update process has started, and an interim Mineral Resource update should be finalised shortly. Drilling has once again commenced on the Bengwenyama project with the full support of the Community Leadership. Our plan is still to deliver our milestones within the projected timeframe."*

Progressive UG2 and Merensky Reef Results

A total of 23 assay results for the UG2 Reef have now been received from the laboratory (refer Appendix 1). These now average a 3PGE+Au grade of 7.67 g/t and 6PGE+Au of 9.28 g/t over 72 cm intersection width (refer Table 1). The drilling results continue to confirm the consistency of the grade and continuity of the UG2 reef and continue to correlate well with the compliant Inferred Mineral Resource 3PGE+Au grade in the MRE of 7.7 g/t over 71 cm.

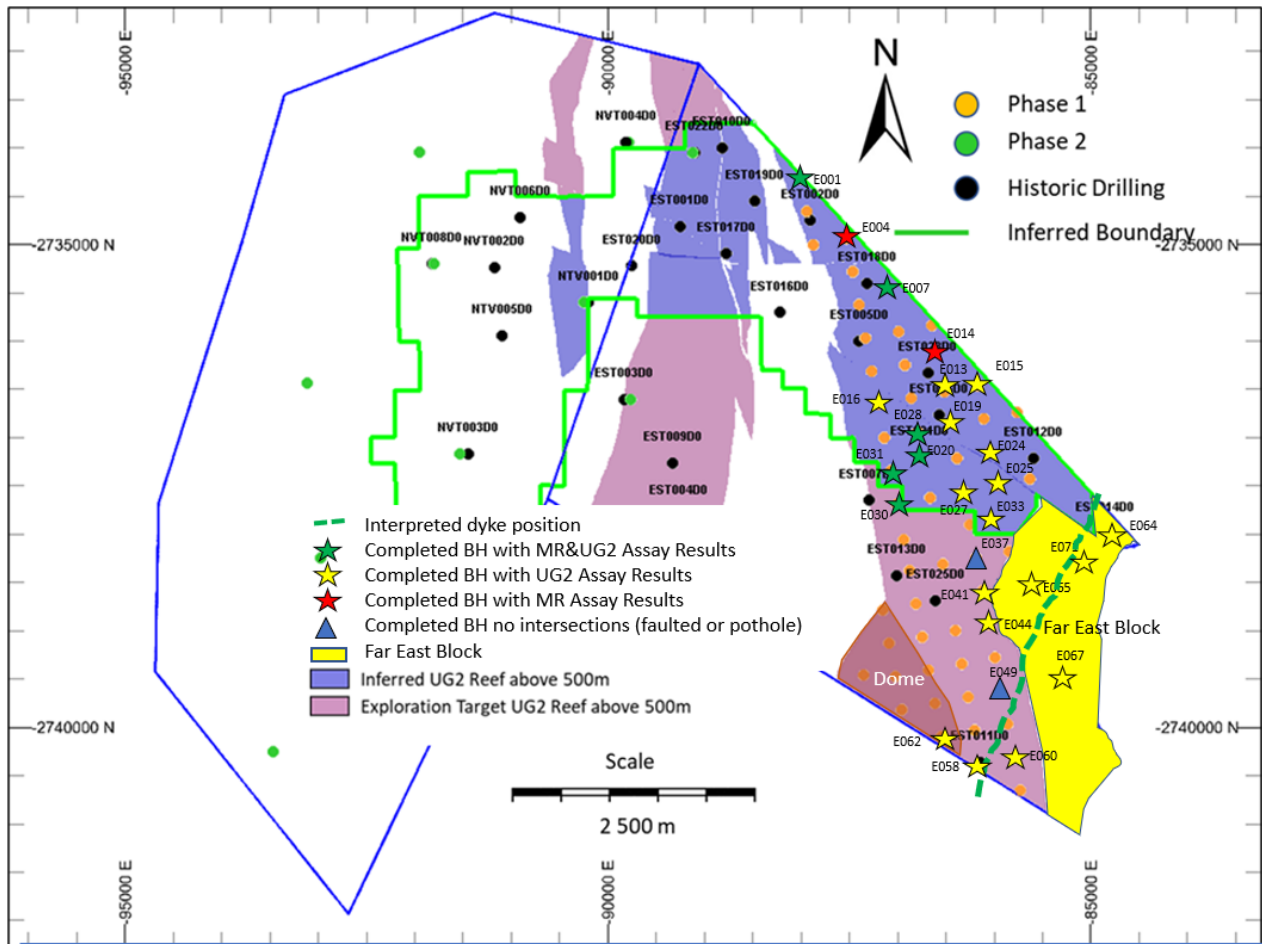
Additional Merensky Reef (MR) assay results have also continued to confirm the continuity of the MR (refer Table 2). The observed MR grades of 2.45 g/t (3PGE+Au) are slightly lower than the Inferred Mineral Resource grade of 2.96 g/, however the sampled area of the MR to date is however only a small portion of the entire MR area. Therefore, the MR grade could still align closer to the expected Inferred Mineral Resource grade of 2.96 g/t, as is emerging for the UG2 reef.

Additional resource potential within the newly discovered Far East Block

There are now four intersections (E064, E065, E067 and E071) in the newly discovered Far East Block (FEB) with an average width of 73 cm and a 6PGE+Au grade of 7.38 g/t (refer Figure 1). The depth of the UG2 in the Far East Block ranges from 156m to 300m below surface with an average of 217m.

The Far East Block, which is seen as upside potential to the JORC (2012) Inferred Mineral Resource, has an estimated surface area of approximately 2.75 km² with an average reef width of 73 cm (average of the four intersections). The geological modelling and resource estimation has started, and an interim Mineral Resource for the project including the FEB should be finalised in April/May.

Figure 1: Location of Completed Drillholes



Resumption of drill programme

Drilling has now resumed at the project following unlawful stoppages early in March. The Company is working closely with the Bengwenyama Community leadership and is receiving the necessary support from both the Bengwenyama-ya-Maswazi Traditional Council and Royal Family. During this time the Bengwenyama Leadership held several meetings to inform the local community about the stoppages. At all the meetings held it received full support from the majority of attendees to continue with the exploration programme and development of the project.

Ongoing assay results from the Phase 1, 63-hole diamond drill programme at Bengwenyama will contribute to a planned upgrade of a portion of the Inferred 18.8Moz (4E) resource to Indicated status and the advancement of a Pre-Feasibility Study, which was initiated during the March quarter (refer ASX Announcement 24 January 2023).

Table 1: Summary of the Progressive UG2 Reef Assay Results

BHID	From (m)	To (m)	UG2 sampled width (cm)	Pt (g/t)	Pd (g/t)	Rh (g/t)	Ir (g/t)	Os (g/t)	Ru (g/t)	Au (g/t)	3PGE+Au (g/t)	6PGE+Au (g/t)	Ni (%)	Cu (%)	Cr ₂ O ₃ (%)
E062	31.25	32.30	105	3.80	3.57	0.88	0.32	0.14	1.43	0.08	8.33	10.22	0.15	0.03	29.56
E058	140.86	141.31	45	4.69	5.64	0.82	0.26	0.19	1.46	0.22	11.37	13.28	0.23	0.01	39.37
E019A	315.83	316.64	81	4.25	4.19	0.79	0.26	0.15	1.31	0.13	9.36	11.09	0.16	0.03	30.87
E033	253.60	254.25	65	4.21	5.00	0.84	0.28	0.16	1.32	0.17	10.21	11.98	0.16	0.02	32.64
E028	373.24	373.81	57	3.40	2.93	0.65	0.23	0.15	1.18	0.05	7.03	8.59	0.13	0.00	31.07
E031	416.55	417.22	67	3.30	3.73	0.63	0.19	0.13	1.09	0.16	7.81	9.23	0.22	0.06	29.36
E025	260.40	261.32	92	3.53	3.43	0.85	0.24	0.16	1.14	0.10	7.91	9.46	0.18	0.04	25.86
E071	179.98	180.75	77	2.94	2.59	0.59	0.19	0.13	0.97	0.12	6.24	7.54	0.16	0.04	28.12
E064	156.17	157.07	90	2.36	1.53	0.49	0.16	0.11	0.83	0.02	4.40	5.51	0.12	0.01	26.50
E030	409.53	410.09	56	4.05	5.20	0.96	0.31	0.20	1.49	0.19	10.40	12.40	0.19	0.04	32.46
E007	417.40	418.14	74	3.98	3.31	0.91	0.29	0.19	1.43	0.08	8.29	10.20	0.16	0.04	31.11
E060D1	178.76	179.31	55	4.14	3.49	1.02	0.33	0.23	1.51	0.06	8.72	10.80	0.14	0.02	31.95
E016	449.22	450.03	81	3.18	2.09	0.71	0.22	0.15	1.08	0.03	6.01	7.46	0.15	0.02	29.13
E044	258.73	259.44	71	2.94	3.10	0.59	0.20	0.15	1.08	0.13	6.76	8.19	0.15	0.03	33.63
E065	231.79	232.52	73	3.49	3.44	0.83	0.25	0.17	1.27	0.12	7.87	9.57	0.16	0.04	28.97
E015	291.87	292.65	78	3.14	3.69	0.69	0.24	0.18	1.20	0.19	7.72	9.35	0.17	0.05	32.95
E020	342.88	343.58	70	2.99	3.07	0.66	0.22	0.15	1.05	0.18	6.90	8.32	0.15	0.05	23.98
E067	299.69	300.22	53	2.98	2.35	0.55	0.21	0.15	1.04	0.03	5.92	7.32	0.13	0.01	31.88
E024	278.75	279.28	53	3.46	4.45	0.76	0.24	0.17	1.20	0.22	8.89	10.49	0.16	0.02	32.76
E013	321.24	321.78	54	4.09	3.69	0.82	0.27	0.19	1.33	0.11	8.70	10.49	0.16	0.03	33.23
E041	250.93	251.62	69	3.76	2.92	0.83	0.27	0.18	1.25	0.08	7.58	9.28	0.21	0.02	28.97
E001	548.05	549.23	118	2.83	2.61	0.58	0.21	0.15	1.01	0.10	6.12	7.49	0.17	0.09	23.90
E027	284.45	285.06	61	3.79	3.11	0.82	0.29	0.20	1.39	0.09	7.81	9.68	0.15	0.02	31.56
Weighted Average			72	3.48	3.34	0.74	0.25	0.16	1.20	0.11	7.67	9.28	0.16	0.03	29.86
(3PGE+Au) Prill Split (%)				45.3	43.5	9.7				1.5	100				
(6PGE+Au) Prill Split (%)				37.5	36.0	8.0	2.6	1.7	13.0	1.2		100			

Table 2: Summary of the Progressive Merensky Reef Assay Results

BHID	From (m)	To (m)	MR sampled width (cm)	Pt (g/t)	Pd (g/t)	Rh (g/t)	Ir (g/t)	Os (g/t)	Ru (g/t)	Au (g/t)	3PGE+Au (g/t)	6PGE+Au (g/t)	Ni (%)	Cu (%)
E028	66.68	68.68	200	1.49	0.47	0.10	0.03	0.03	0.21	0.08	2.14	2.41	0.09	0.02
E004	210.75	212.92	217	1.15	0.44	0.06	0.02	0.02	0.14	0.07	1.73	1.92	0.10	0.02
E030	142.98	144.77	179	1.66	0.63	0.13	0.04	0.03	0.24	0.15	2.56	2.88	0.13	0.04
E031	122.38	124.31	193	1.69	0.91	0.10	0.03	0.03	0.22	0.16	2.86	3.15	0.14	0.07
E007	100.36	102.56	220	2.15	0.89	0.12	0.04	0.04	0.24	0.11	3.27	3.59	0.19	0.06
<i>*E020</i>	<i>54.18</i>	<i>55.39</i>	<i>121</i>	<i>2.11</i>	<i>1.15</i>	<i>0.12</i>	<i>0.04</i>	<i>0.04</i>	<i>0.23</i>	<i>0.37</i>	<i>3.76</i>	<i>4.06</i>	<i>0.26</i>	<i>0.10</i>
E001	259.8	261.66	186	1.07	0.46	0.14	0.03	0.03	0.19	0.05	1.71	1.96	0.10	0.02
E014	37.26	39.68	242	1.40	0.49	0.10	0.03	0.03	0.19	0.11	2.11	2.35	0.10	0.03
Weighted Average			195	1.57	0.65	0.11	0.03	0.03	0.21	0.13	2.45	2.72	0.13	0.04
(3PGE+Au) Prill Split (%)				63.9	26.6	4.4				5.1	100			
(6PGE+Au) Prill Split (%)				57.6	24.0	3.9	1.2	1.1	7.6	4.6		100		

**Red Italic figures – Possible incomplete intersection with a potentially faulted bottom contact intersection.*

This announcement has been approved for release by the Board of Southern Palladium Limited.

About Southern Palladium:

Southern Palladium Limited (ASX:SPD, JSE:SDL) is a dual-listed platinum group metal (PGM) company developing the advanced Bengwenyama PGM project, particularly rich in palladium/rhodium, in South Africa. The project is located on the Eastern Limb of the Bushveld Complex, which contains more than 70% of the world's known Platinum Group Metal (PGM) Resources.

With its 70% stake in the project, the Company's focus will be on the delivery of a Pre-Feasibility study and Mining Right application through a geophysical survey that has recently been completed, a two-phase diamond drill programme which has commenced in August 2022 as well as various technical studies to be completed.

A major development opportunity in the global PGM market, previous exploration at Bengwenyama has already delivered a JORC 2012-compliant Inferred Mineral Resource of 18.8Moz within two ore horizons – the UG2 chromitite and Merensky Reef.

In addition, an assessment by mining industry consultants CSA Global assessed the total resource potential of Bengwenyama at between 134–201Mt at a grade of 3.5–5.2 (3 PGE + Au g/t). The Company is led by an experienced on-ground management team including some of South Africa's most high-profile mining industry executives.

JORC Statement

The information in this report that relates to Mineral Resources at the Bengwenyama Project is based on details originally reported in the Independent Technical Assessment Report (ITAR) No. R246.2021 prepared by CSA Global dated 19 April 2022 contained in the Company's Prospectus and Pre-Listing Statement dated 22 April 2022. The information in the ITAR that relates to Technical Assessment of the Mineral Assets, Exploration Targets, or Exploration Results is based on information compiled and conclusions derived by Dr Brendan Clarke, a Partner and an employee of CSA Global. The information in the ITAR that relates to Mineral Resources is based on work undertaken by Anton Geldenhuys, a Principal Consultant and employee of CSA Global. The Prospectus containing the ITAR can be found on the Company's website at: <https://www.southernpalladium.com/site/investor-centre/prospectus>

The Company confirms that it is not aware of any new information or data that materially affects the information included in the ITAR. The Company also confirms that all material assumptions and technical parameters underpinning the estimates in the ITAR continue to apply and have not materially changed. In addition, the Company confirms that the form and context in which the Competent Person's findings are presented have not been materially modified.

Competent Person Statement

The scientific and technical information contained in this announcement has been reviewed, prepared and approved by Mr Uwe Engelmann (BSc (Zoo. & Bot.), BSc Hons (Geol.), Pr.Sci.Nat. No. 400058/08, FGSSA). Mr Engelmann is a director of Minxcon (Pty) Ltd and a member of the South African Council for Natural Scientific Professions, and has sufficient experience relevant to the styles of mineralisation and activities being undertaken to qualify as a Competent Person, as defined in the 2012 Edition of the 'Australasian Code for Reporting of Exploration Results, Mineral Resources and Ore Reserves'. Mr Engelmann has a beneficial interest in Southern Palladium through a shareholding in Nicolas Daniel Resources Proprietary Limited.

For further information, please contact:

Johan Odendaal
Managing Director
Southern Palladium
Phone: +27 82 557 6088
Email: johan.odendaal@southernpalladium.com

Media & investor relations inquiries: Sam Jacobs, Six Degrees Investor Relations: +61 423 755 909



Follow [@SouthernPalladium](https://twitter.com/SouthernPalladium) on Twitter



Follow [Southern Palladium](https://www.linkedin.com/company/southern-palladium) on LinkedIn

Appendix 1. Reef Intersection Summary for Bengwenyama Drillholes

Drilling	Merensky Reef				UG2 Reef			
	From (m)	To (m)	Intersection Width (m)	Comment	From (m)	To (m)	Intersection Width (m)	Comment
E019	20.25	22.45	2.20	Highly weathered & friable, inconclusive	-	-	-	Hole abandoned
E019A	19.55	22.35	2.80	Highly weathered & friable, inconclusive	315.85	316.61	0.76	Complete intersection
E060	-	-	-	No MR expected – East of MR subcrop	-	-	-	Core loss
E060_D1	-	-	-	No MR expected – East of MR subcrop	178.78	179.29	0.51	Complete intersection
E062	-	-	-	No MR expected – East of MR subcrop	31.27	32.30	1.03	Complete intersection, moderately weathered
E062_D1	-	-	-	No MR expected – East of MR subcrop	31.45	32.27	0.82	Moderately weathered & faulted. Incomplete intersection. Core loss.
E062_D2	-	-	-	No MR expected – East of MR subcrop	31.16	31.56	0.40	Moderately weathered & faulted. Incomplete intersection. Core loss.
E058	-	-	-	No MR expected – East of MR subcrop	140.88	141.29	0.41	Complete intersection
E033	-	-	-	No MR expected – East of MR subcrop	253.62	254.25	0.63	Complete intersection
E028	66.70	68.66	1.96	Complete intersection	373.26	373.79	0.53	Complete intersection
E004	210.77	212.90	2.13	Complete intersection	517.33	517.57	0.24	Poorly developed UG2
E004_D1	-	-	-	Deflection below MR	515.83	516.52	0.69	Poorly developed UG2
E030	143.00	144.68	1.68	Complete intersection	409.55	410.07	0.52	Complete intersection
E025	-	-	-	No MR expected – East of MR subcrop	260.42	261.32	0.90	Complete intersection
E037	-	-	-	No MR expected – East of MR subcrop	-	-	-	Not present / Pothole?
E049	-	-	-	No MR expected – East of MR subcrop	-	-	-	Faulted
E031	122.40	124.29	1.89	Complete intersection	416.57	417.19	0.62	Complete intersection
E044	-	-	-	No MR expected – East of MR subcrop	258.75	259.42	0.67	Complete intersection
E016	-	-	-	Faulted	449.24	450.01	0.77	Complete intersection
E007	100.38	102.54	2.16	Complete intersection	417.42	418.12	0.70	Complete intersection
E064	-	-	-	No MR expected – East of MR subcrop	156.19	157.05	0.86	Complete intersection
E071	-	-	-	No MR expected – East of MR subcrop	180.04	180.73	0.69	Complete intersection
E065	-	-	-	No MR expected – East of MR subcrop	231.81	232.50	0.69	Complete intersection
E001	259.78	261.44	1.66	Complete intersection	548.07	549.21	1.14	Complete intersection
E015	-	-	-	No MR expected – East of MR subcrop	291.89	292.63	0.74	Complete intersection

E020	54.20	54.57	0.37	MR faulted	342.90	343.56	0.66	Complete intersection
E041	-	-	-	No MR expected – East of MR subcrop	250.95	251.60	0.65	Complete intersection
E067	-	-	-	No MR expected – East of MR subcrop	299.70	300.20	0.50	Complete intersection
E013	12.00	18.62	6.62	Highly weathered & friable, inconclusive? (core loss)	321.26	321.76	0.50	Complete intersection
E024	-	-	-	No MR expected – East of MR subcrop	278.77	279.26	0.49	Complete intersection
<i>E069*</i>	-	-	-	<i>No MR expected – East of MR subcrop</i>	-	-	-	<i>UG2 expected ~ 240m</i>
E027	-	-	-	No MR expected – East of MR subcrop	284.47	285.04	0.57	Complete intersection
<i>E014*</i>	<i>37.28</i>	<i>39.68</i>	<i>2.40</i>	<i>Complete intersection</i>	-	-	-	<i>UG2 expected ~ 327m</i>
<i>E052*</i>	-	-	-	<i>No MR expected – East of MR subcrop</i>	-	-	-	<i>UG2 expected ~ 126m</i>

Red italic with asterisk are drillholes in progress.

Appendix 2. JORC Checklist – Table 1 Assessment and Reporting Criteria

SECTION 1: SAMPLING TECHNIQUES AND DATA		
Criteria	Explanation	Detail
Sampling techniques	Nature and quality of sampling (e.g. cut channels, random chips, or specific specialised industry standard measurement tools appropriate to the minerals under investigation, such as down hole gamma sondes, or handheld XRF instruments, etc.). These examples should not be taken as limiting the broad meaning of sampling.	20 cm samples are taken within the reef horizon unless there is a lithological reason to deviate from this. A single sample is also taken in the hanging wall and footwall to test for mineralisation in the direct waste rock. The samples are split with a core saw and one half is submitted to the laboratory and the other half keep in the core tray.
	Include reference to measures taken to ensure sample representivity and the appropriate calibration of any measurement tools or systems used.	The core is orientated in such a way that the two halves are equal.
	Aspects of the determination of mineralisation that are Material to the Public Report. In cases where 'industry standard' work has been done this would be relatively simple (e.g. 'reverse circulation drilling was used to obtain 1 m samples from which 3 kg was pulverised to produce a 30 g charge for fire assay'). In other cases more explanation may be required, such as where there is coarse gold that has inherent sampling problems. Unusual commodities or mineralisation types (e.g. submarine nodules) may warrant disclosure of detailed information.	The sampling methodology is standard and as per industry practice in the Bushveld Complex (BC). The samples are 20 cm in length and are split into two equal halves with one half being submitted for analysis. The core size starts as HQ (10 m to 50 m) but is NQ by the time the reef is intersected.
Drilling techniques	Drill type (e.g. core, reverse circulation, open-hole hammer, rotary air blast, auger, Bangka, sonic, etc.) and details (e.g. core diameter, triple or standard tube, depth of diamond tails, face-sampling bit or other type, whether core is oriented and if so, by what method, etc.).	The drillholes start with HQ (for approximately 10-50 m) in the weathered zone but are then drilled NQ once in the fresher material. The drill rigs being utilised have been the CS 1500, Delta 520 and a smaller Longyear 44. The drill contractor is Geomech Africa.
Drill sample recovery	Method of recording and assessing core and chip sample recoveries and results assessed.	Initially the core was scanned in with the software ScanIT which scans the core with high resolution photos and the geologists reconcile the depths and core losses per 3 m run. The Core recoveries and RQD are then calculated for the drillhole. ScanIT has however been discontinued and the core is now photographed and the core recovery and RQD is calculated manually by the geological assistants.
	Measures taken to maximise sample recovery and ensure representative nature of the samples.	The geologist informs the drilling supervisor at what depth the reef is expected so that they can take extra precautions around the anticipated reef depth. The core recoveries are measured per 3 m run and if there is excessive core loss in the reef horizon it is marked as a non-representative sample and will not be used in the resource estimation process.
	Whether a relationship exists between sample recovery and grade and whether sample bias may have occurred due to preferential loss/gain of fine/coarse material.	Samples have been submitted to the ALS laboratory in Johannesburg, but there is only limited data available at this stage, so this has not been checked yet. The core recoveries for the intersections however all have good core recoveries besides the faulted intersections.
Logging	Whether core and chip samples have been geologically and geotechnically logged to a level of detail to support appropriate Mineral Resource estimation, mining studies and metallurgical studies.	The core was initially scanned into ScanIT software which produced high resolution images. This has however been discontinued. The logging is conducted on paper log sheets or tablets at the core with dropdown menus. Legends have been set up in excel that cover the necessary detailed required for Mineral Resource estimation. Alpha angles and structure detail is also observed and logged. The beta angle is not measured as the core is not orientated but the downhole televiewer survey supplies structural orientation information which is incorporated into the logs.
	Whether logging is qualitative or quantitative in nature. Core (or costean, channel, etc.) photography.	Core logging is qualitative and utilises excel spreadsheets on tablets.
	The total length and percentage of the relevant intersections logged.	The total drillhole is geologically logged and photographed and the televiewer survey is conducted from 100 m above the reef horizon for additional structural information.
Sub-sampling techniques and sample preparation	If core, whether cut or sawn and whether quarter, half or all core taken.	The core is cut in two equal halves for sampling and storage purposes.
	If non-core, whether riffled, tube sampled, rotary split, etc. and whether sampled wet or dry.	This project only makes use of core drilling.

SECTION 1: SAMPLING TECHNIQUES AND DATA		
Criteria	Explanation	Detail
	For all sample types, the nature, quality and appropriateness of the sample preparation technique.	The sample preparation code at ALS is PREP-31H which has the following procedure: - Login of samples into the system, weighing, fine crushing of entire sample to 70% - 2 mm, split off 500 g and pulverize split to better than 85% passing 75 microns.
	Quality control procedures adopted for all sub-sampling stages to maximise representivity of samples.	The QAQC sequence is as follows: - If the batch is less than 20 samples the batch starts and ends with a blank and a CRM and duplicate are inserted into the sample stream. If the batch is great than 20 samples then the batch starts and ends with a blank and every tenth sample is either a CRM, duplicate or blank. This equates to between 20% and 10% QAQC samples.
	Measures taken to ensure that the sampling is representative of the in situ material collected, including for instance results for field duplicate/second-half sampling.	The sampling of the reef is reef material only except for the first and last sample of the reef as it will have 2 cm of hanging wall or footwall material to ensure the entire mineralisation is captured. This 2 cm dilution will be calculated into the reef width. The hanging wall and footwall are sampled separately to the reef. Hence the reef samples are representative of the <i>in situ</i> reef horizon. Requested duplicates are pulp duplicates and the CRMs are material from the UG2 and MR from African Mineral Standards (AMIS).
	Whether sample sizes are appropriate to the grain size of the material being sampled.	The reef horizon is sampled in 20 cm increments so that the grade distribution can be observed if a mining cut is required. The UG2 reef is approximately 70 cm wide and will have three to four samples which will be composited later. The MR is wider at around 200 cm and will have about ten individual samples to determine the grade distribution. These will also be composited later for Mineral Resource Estimation purposes. Hanging wall and footwall samples are also taken to check if there is any mineralisation in the direct surrounding waste rock. This is industry best practice for the BC.
Quality of assay data and laboratory tests	The nature, quality and appropriateness of the assaying and laboratory procedures used and whether the technique is considered partial or total.	The UG2 reef will be assayed for 4E and 6E as well as for Cu, Ni, Co, Cr and Fe. The MR will be assayed for the same except the Cr and Fe as it is not a chromitite seam but a pyroxenite layer. The ALS methods are as follows: - PGM-ICP23 - Pt, Pd, Au package using lead fire assay with ICP-AES finish. 30 g nominal sample weight. Rh-ICP28 - Fire assay fusion using lead flux with Pd collector for Rh determination by ICPAES. 10 g nominal sample weight. PGM-MS25NS - The Platinum Group Metals are separated from the gangue material using the Nickel Sulphide Fire Assay procedure. After dissolution of the pulp with aqua regia, PGMs are determined by ICP-MS. ME-XRF26s - Analysis of Chromite ore samples by fused disc / XRF. This method is suitable for the determination of major and minor elements in ore samples which require a high dilution digest such as Chromite ores. Elements that will be analysed are Cr, Cu, Ni, Fe and Co. All methodologies are total.
	For geophysical tools, spectrometers, handheld XRF instruments, etc., the parameters used in determining the analysis including instrument make and model, reading times, calibrations factors applied and their derivation, etc.	All analytical work is undertaken by ALS Chemex South Africa (Pty) Ltd, located in Johannesburg, which is part of the ALS group. The South African laboratory is ISO 17025 accredited by SANAS (South African National Accreditation System).
	Nature of quality control procedures adopted (e.g. standards, blanks, duplicates, external laboratory checks) and whether acceptable levels of accuracy (i.e. lack of bias) and precision have been established.	QAQC procedure has been described above.
Verification of sampling and assaying	The verification of significant intersections by either independent or alternative company personnel.	An umpire laboratory will be utilised as an additional check at a later stage.
	Discuss any adjustment to assay data.	No adjustments have been made to the assayed results.
	Documentation of primary data, data entry procedures, data verification, data storage (physical and electronic) protocols.	The assay results are received from the laboratory in pdf format and excel format. The excel form is imported into the Minxcon excel database. These are checked by the senior geologist. The assay certificates are stored in the project folder.
	The use of twinned holes.	No twinning has been undertaken to date.
Location of data points	Accuracy and quality of surveys used to locate drillholes (collar and down-hole surveys), trenches, mine workings and other locations used in Mineral Resource estimation.	Drillhole collar positions are recorded by handheld Garmin GPS. The drillholes will be surveyed in at a later stage.
	Specification of the grid system used.	The coordinate system used is LO31.

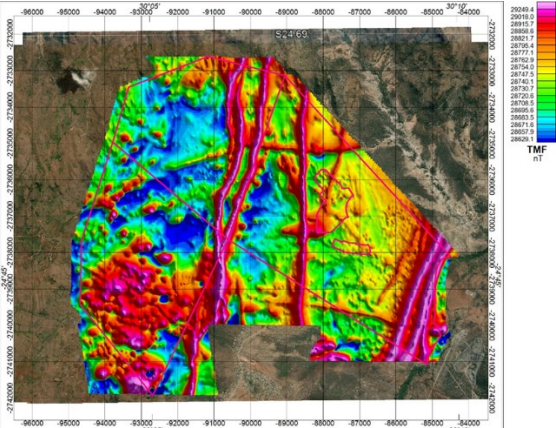
SECTION 1: SAMPLING TECHNIQUES AND DATA		
Criteria	Explanation	Detail
	Quality and adequacy of topographic control.	Regional three-dimensional (3D) topography was constructed from regional surface contours and Shuttle Radar Topography Mission (SRTM) data. The surface was trimmed 300–500 m beyond the Project perimeter.
Data spacing and distribution	Data spacing for reporting of Exploration Results.	The final drillhole spacing will be approximately 350 m. The drilling completed to date or in progress has a wider spacing to get a better understanding of the larger structural domains of the project.
	Whether the data spacing and distribution is sufficient to establish the degree of geological and grade continuity appropriate for the Mineral Resource and Ore Reserve estimation procedure(s) and classifications applied.	Geological continuity is based on the knowledge of the surrounding area and 3D model constructed from historical data. The 24 of the 26 completed drillholes to date have intersected the UG2 which is confirming the position of the UG2 reef. Of the 12 drillholes expected to intersect the MR nine have intersected the reef and two have been faulted.
	Whether sample compositing has been applied.	The 20cm (or larger) samples are composited to obtain the weighted average of the entire intersection.
Orientation of data in relation to geological structure	Whether the orientation of sampling achieves unbiased sampling of possible structures and the extent to which this is known, considering the deposit type.	The drillholes are vertical drillholes and intersect the reef close to right angles. The sample is therefore unbiased. If the reef is faulted it will be noted and if the reef intersection is not representative, it will not be used in Mineral Resource estimations.
	If the relationship between the drilling orientation and the orientation of key mineralised structures is considered to have introduced a sampling bias, this should be assessed and reported if material.	No sampling bias will be introduced based on the drilling orientation as they are close to perpendicular.
Sample security	The measures taken to ensure sample security.	Samples are only handled by the drilling contractor and the Minxcon geological staff. There is a strict chain of custody that is followed from the time the core leaves the drill site to the time the sample is received by the laboratory.
Audits or reviews	The results of any audits or reviews of sampling techniques and data.	No audits have been undertaken on the drilling to date.

SECTION 2: REPORTING OF EXPLORATION RESULTS		
Criteria	Explanation	Detail
Mineral tenement and land tenure status	Type, reference name/number, location and ownership including agreements or material issues with third parties such as joint ventures, partnerships, overriding royalties, native title interests, historical sites, wilderness or national park and environmental settings.	A Preferent Prospecting Right LP002PPR was granted to the Bengwenyama Tribe's investment vehicle, Miracle Upon Miracle Investments (Pty) Ltd in 2015 over the farms Eerstegeeluk 322 KT and Nootverwacht 324 KT. This was renewed in early 2021 and is valid until February 2024. The Right covers all elements of potential economic interest.
	The security of the tenure held at the time of reporting along with any known impediments to obtaining a licence to operate in the area.	The right is valid until February 2024.
Exploration done by other parties	Acknowledgment and appraisal of exploration by other parties.	Drilling was undertaken by Rustenburg Platinum Mines from 1966 to 1985. Trojan exploration completed drilling on Eerstegeeluk between 1990 and 1993. Drilling prior to 1994 was not used as part of this Mineral Resource estimate (MRE) due to the incomplete nature or availability of the drillhole data. Nkwe completed drillholes in 2007–2008. This drilling supports the MRE. Reconnaissance mapping has been completed by previous operators.
Geology	Deposit type, geological setting and style of mineralisation.	The target UG2 and Merensky reefs occur within the Upper Critical Zone of the Rustenburg Layered Suite of the BC. These reefs are laterally continuous for tens to hundreds of kilometres. The UG2 comprises mineralised chromitite, whereas the Merensky Reef is defined as the mineralised pyroxenitic zone between upper and lower chromitite stringers. The BC is the world's largest igneous intrusion and

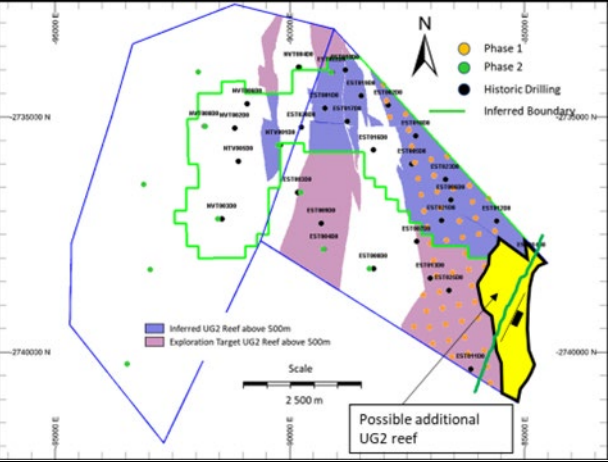
SECTION 2: REPORTING OF EXPLORATION RESULTS

Criteria	Explanation	Detail																																																																																																																																																																																																																																																																																																																																																																																																																		
		also the largest global repository of PGEs and chromitite. Both reefs are stratiform with relatively minor disruptive structural features and replacement deposits.																																																																																																																																																																																																																																																																																																																																																																																																																		
Drillhole Information	<p>A summary of all information material to the understanding of the exploration results including a tabulation of the following information for all Material drillholes:</p> <ul style="list-style-type: none"> * easting and northing of the drillhole collar * elevation or RL (Reduced Level – elevation above sea level in metres) of the drillhole collar * dip and azimuth of the hole * down hole length and interception depth * hole length. 	<table border="1"> <thead> <tr> <th rowspan="2">BH ID</th> <th rowspan="2">Date Started</th> <th rowspan="2">Date Completed</th> <th colspan="5">Drilling</th> <th rowspan="2">From (m)</th> <th rowspan="2">To (m)</th> <th rowspan="2">Drilled Metres</th> <th rowspan="2">Comment</th> </tr> <tr> <th>Easting</th> <th>Northing</th> <th>Elevation</th> <th></th> <th></th> </tr> </thead> <tbody> <tr> <td>E019</td> <td>23-Aug-22</td> <td>05-Sep-22</td> <td>-86451</td> <td>-2736870</td> <td>804</td> <td>0.00</td> <td>32.42</td> <td>32.42</td> <td>0</td> <td>Abandoned, stuck drill rods</td> </tr> <tr> <td>E019a</td> <td>06-Sep-22</td> <td>05-Oct-22</td> <td>-86447</td> <td>-2736870</td> <td>804</td> <td>0.00</td> <td>323.77</td> <td>323.77</td> <td>0</td> <td>EOH, completed</td> </tr> <tr> <td>E060</td> <td>26-Aug-22</td> <td>19-Oct-22</td> <td>-85837</td> <td>-2740292</td> <td>774</td> <td>0.00</td> <td>206.72</td> <td>206.72</td> <td>0</td> <td>EOH, completed</td> </tr> <tr> <td>E060_D1</td> <td>23-Nov-22</td> <td>28-Nov-22</td> <td>-85837</td> <td>-2740292</td> <td>635</td> <td>139.00</td> <td>185.63</td> <td>48.53</td> <td>0</td> <td>EOH, completed</td> </tr> <tr> <td>E062</td> <td>26-Aug-22</td> <td>02-Sep-22</td> <td>-86184</td> <td>-2740002</td> <td>777</td> <td>0.00</td> <td>120.34</td> <td>120.34</td> <td>0</td> <td>EOH, completed, extended to UCS1 for stratigraphy</td> </tr> <tr> <td>E062_D1</td> <td>07-Sep-22</td> <td>08-Sep-22</td> <td>-86184</td> <td>-2740002</td> <td>759</td> <td>18.30</td> <td>34.92</td> <td>16.62</td> <td>0</td> <td>Deflection completed, faulted UCS2</td> </tr> <tr> <td>E062_D2</td> <td>08-Sep-22</td> <td>10-Sep-22</td> <td>-86184</td> <td>-2740002</td> <td>764</td> <td>13.30</td> <td>33.00</td> <td>19.70</td> <td>0</td> <td>Deflection completed, faulted UCS2</td> </tr> <tr> <td>E058</td> <td>12-Sep-22</td> <td>05-Oct-22</td> <td>-86127</td> <td>-2740386</td> <td>777</td> <td>0.00</td> <td>158.25</td> <td>158.25</td> <td>0</td> <td>EOH, completed</td> </tr> <tr> <td>E035</td> <td>07-Sep-22</td> <td>15-Oct-22</td> <td>-85930</td> <td>-2737823</td> <td>796</td> <td>0.00</td> <td>261.58</td> <td>261.58</td> <td>0</td> <td>EOH, completed</td> </tr> <tr> <td>E028</td> <td>07-Oct-22</td> <td>24-Oct-22</td> <td>-86784</td> <td>-2736873</td> <td>806</td> <td>0.00</td> <td>383.75</td> <td>383.75</td> <td>0</td> <td>EOH, completed</td> </tr> <tr> <td>E004</td> <td>14-Oct-22</td> <td>15-Nov-22</td> <td>-87547</td> <td>-2734962</td> <td>839</td> <td>0.00</td> <td>524.50</td> <td>524.50</td> <td>0</td> <td>EOH, completed</td> </tr> <tr> <td>E004_D1</td> <td>18-Nov-22</td> <td>24-Nov-22</td> <td>-87547</td> <td>-2734962</td> <td>382</td> <td>457.00</td> <td>518.75</td> <td>81.75</td> <td>0</td> <td>Deflection completed</td> </tr> <tr> <td>E032</td> <td>26-Oct-22</td> <td>05-Dec-22</td> <td>-87118</td> <td>-2737304</td> <td>801</td> <td>0.00</td> <td>413.75</td> <td>413.75</td> <td>0</td> <td>EOH, completed</td> </tr> <tr> <td>E025</td> <td>19-Oct-22</td> <td>09-Nov-22</td> <td>-85963</td> <td>-2737487</td> <td>796</td> <td>0.00</td> <td>267.58</td> <td>267.58</td> <td>0</td> <td>EOH, completed</td> </tr> <tr> <td>E037</td> <td>13-Oct-22</td> <td>02-Nov-22</td> <td>-86264</td> <td>-2738274</td> <td>776</td> <td>0.00</td> <td>282.45</td> <td>282.45</td> <td>0</td> <td>EOH, completed</td> </tr> <tr> <td>E049</td> <td>21-Oct-22</td> <td>19-Nov-22</td> <td>-85949</td> <td>-2735599</td> <td>771</td> <td>0.00</td> <td>322.75</td> <td>322.75</td> <td>0</td> <td>EOH, completed, extended to UCS1 for stratigraphy</td> </tr> <tr> <td>E031</td> <td>07-Nov-22</td> <td>22-Nov-22</td> <td>-87054</td> <td>-2737306</td> <td>802</td> <td>0.00</td> <td>423.22</td> <td>423.22</td> <td>0</td> <td>EOH, completed</td> </tr> <tr> <td>E044</td> <td>12-Nov-22</td> <td>14-Dec-22</td> <td>-86400</td> <td>-2739001</td> <td>775</td> <td>0.00</td> <td>263.73</td> <td>263.73</td> <td>0</td> <td>EOH, completed</td> </tr> <tr> <td>E016</td> <td>28-Nov-22</td> <td>14-Dec-22</td> <td>-87174</td> <td>-2736679</td> <td>815</td> <td>0.00</td> <td>325.68</td> <td>454.68</td> <td>0</td> <td>EOH, completed</td> </tr> <tr> <td>E007</td> <td>28-Nov-22</td> <td>10-Dec-22</td> <td>-87014</td> <td>-2735562</td> <td>826</td> <td>0.00</td> <td>422.80</td> <td>422.80</td> <td>0</td> <td>EOH, completed</td> </tr> <tr> <td>E064</td> <td>29-Nov-22</td> <td>06-Dec-22</td> <td>-84845</td> <td>-2738001</td> <td>750</td> <td>0.00</td> <td>166.40</td> <td>166.40</td> <td>0</td> <td>EOH, completed</td> </tr> <tr> <td>E071</td> <td>07-Dec-22</td> <td>12-Dec-22</td> <td>-85047</td> <td>-2738333</td> <td>750</td> <td>0.00</td> <td>188.80</td> <td>188.80</td> <td>0</td> <td>EOH, completed</td> </tr> <tr> <td>E065</td> <td>08-Dec-22</td> <td>15-Dec-22</td> <td>-85571</td> <td>-2738436</td> <td>764</td> <td>0.00</td> <td>239.75</td> <td>239.75</td> <td>0</td> <td>EOH, completed</td> </tr> <tr> <td>E001</td> <td>12-Jan-23</td> <td>06-Feb-23</td> <td>-87895</td> <td>-2734357</td> <td>858</td> <td>0.00</td> <td>554.75</td> <td>554.75</td> <td>0</td> <td>EOH, completed</td> </tr> <tr> <td>E015</td> <td>12-Jan-23</td> <td>19-Jan-23</td> <td>-86172</td> <td>-2736461</td> <td>802</td> <td>0.00</td> <td>298.72</td> <td>298.72</td> <td>0</td> <td>EOH, completed</td> </tr> <tr> <td>E020</td> <td>11-Jan-23</td> <td>21-Jan-23</td> <td>-86725</td> <td>-2737285</td> <td>798</td> <td>0.00</td> <td>350.75</td> <td>350.75</td> <td>0</td> <td>EOH, completed</td> </tr> <tr> <td>E041</td> <td>13-Jan-23</td> <td>08-Feb-23</td> <td>-86452</td> <td>-2738758</td> <td>770</td> <td>0.00</td> <td>258.77</td> <td>258.77</td> <td>0</td> <td>EOH, completed</td> </tr> <tr> <td>E067</td> <td>12-Jan-23</td> <td>25-Jan-23</td> <td>-85465</td> <td>-2739534</td> <td>762</td> <td>0.00</td> <td>306.45</td> <td>306.45</td> <td>0</td> <td>EOH, completed</td> </tr> <tr> <td>E013</td> <td>23-Jan-23</td> <td>01-Feb-23</td> <td>-86435</td> <td>-2736523</td> <td>809</td> <td>0.00</td> <td>327.28</td> <td>327.28</td> <td>0</td> <td>EOH, completed</td> </tr> <tr> <td>E024</td> <td>23-Jan-23</td> <td>29-Jan-23</td> <td>-86104</td> <td>-2737215</td> <td>800</td> <td>0.00</td> <td>284.75</td> <td>284.75</td> <td>0</td> <td>EOH, completed</td> </tr> <tr> <td>E069</td> <td>27-Jan-23</td> <td></td> <td>-85313</td> <td>-2740516</td> <td>763</td> <td>0.00</td> <td>284.65</td> <td>284.65</td> <td>0</td> <td>Drilling in progress</td> </tr> <tr> <td>E027</td> <td>01-Feb-23</td> <td>21-Feb-23</td> <td>-86331</td> <td>-2737568</td> <td>788</td> <td>0.00</td> <td>290.75</td> <td>290.75</td> <td>0</td> <td>EOH, completed</td> </tr> <tr> <td>E014</td> <td>07-Feb-23</td> <td></td> <td>-86588</td> <td>-2736213</td> <td>811</td> <td>0.00</td> <td>106.10</td> <td>106.10</td> <td>0</td> <td>Drilling in progress</td> </tr> <tr> <td>E052</td> <td>21-Feb-23</td> <td></td> <td>-86337</td> <td>-2739349</td> <td>775</td> <td>0.00</td> <td>3.55</td> <td>3.55</td> <td>0</td> <td>Drilling in progress</td> </tr> <tr> <td>E001D1</td> <td></td> <td></td> <td>-87968</td> <td>-2734368</td> <td>350</td> <td>508.00</td> <td>0</td> <td>0</td> <td>0</td> <td>Set-up</td> </tr> </tbody> </table>	BH ID	Date Started	Date Completed	Drilling					From (m)	To (m)	Drilled Metres	Comment	Easting	Northing	Elevation			E019	23-Aug-22	05-Sep-22	-86451	-2736870	804	0.00	32.42	32.42	0	Abandoned, stuck drill rods	E019a	06-Sep-22	05-Oct-22	-86447	-2736870	804	0.00	323.77	323.77	0	EOH, completed	E060	26-Aug-22	19-Oct-22	-85837	-2740292	774	0.00	206.72	206.72	0	EOH, completed	E060_D1	23-Nov-22	28-Nov-22	-85837	-2740292	635	139.00	185.63	48.53	0	EOH, completed	E062	26-Aug-22	02-Sep-22	-86184	-2740002	777	0.00	120.34	120.34	0	EOH, completed, extended to UCS1 for stratigraphy	E062_D1	07-Sep-22	08-Sep-22	-86184	-2740002	759	18.30	34.92	16.62	0	Deflection completed, faulted UCS2	E062_D2	08-Sep-22	10-Sep-22	-86184	-2740002	764	13.30	33.00	19.70	0	Deflection completed, faulted UCS2	E058	12-Sep-22	05-Oct-22	-86127	-2740386	777	0.00	158.25	158.25	0	EOH, completed	E035	07-Sep-22	15-Oct-22	-85930	-2737823	796	0.00	261.58	261.58	0	EOH, completed	E028	07-Oct-22	24-Oct-22	-86784	-2736873	806	0.00	383.75	383.75	0	EOH, completed	E004	14-Oct-22	15-Nov-22	-87547	-2734962	839	0.00	524.50	524.50	0	EOH, completed	E004_D1	18-Nov-22	24-Nov-22	-87547	-2734962	382	457.00	518.75	81.75	0	Deflection completed	E032	26-Oct-22	05-Dec-22	-87118	-2737304	801	0.00	413.75	413.75	0	EOH, completed	E025	19-Oct-22	09-Nov-22	-85963	-2737487	796	0.00	267.58	267.58	0	EOH, completed	E037	13-Oct-22	02-Nov-22	-86264	-2738274	776	0.00	282.45	282.45	0	EOH, completed	E049	21-Oct-22	19-Nov-22	-85949	-2735599	771	0.00	322.75	322.75	0	EOH, completed, extended to UCS1 for stratigraphy	E031	07-Nov-22	22-Nov-22	-87054	-2737306	802	0.00	423.22	423.22	0	EOH, completed	E044	12-Nov-22	14-Dec-22	-86400	-2739001	775	0.00	263.73	263.73	0	EOH, completed	E016	28-Nov-22	14-Dec-22	-87174	-2736679	815	0.00	325.68	454.68	0	EOH, completed	E007	28-Nov-22	10-Dec-22	-87014	-2735562	826	0.00	422.80	422.80	0	EOH, completed	E064	29-Nov-22	06-Dec-22	-84845	-2738001	750	0.00	166.40	166.40	0	EOH, completed	E071	07-Dec-22	12-Dec-22	-85047	-2738333	750	0.00	188.80	188.80	0	EOH, completed	E065	08-Dec-22	15-Dec-22	-85571	-2738436	764	0.00	239.75	239.75	0	EOH, completed	E001	12-Jan-23	06-Feb-23	-87895	-2734357	858	0.00	554.75	554.75	0	EOH, completed	E015	12-Jan-23	19-Jan-23	-86172	-2736461	802	0.00	298.72	298.72	0	EOH, completed	E020	11-Jan-23	21-Jan-23	-86725	-2737285	798	0.00	350.75	350.75	0	EOH, completed	E041	13-Jan-23	08-Feb-23	-86452	-2738758	770	0.00	258.77	258.77	0	EOH, completed	E067	12-Jan-23	25-Jan-23	-85465	-2739534	762	0.00	306.45	306.45	0	EOH, completed	E013	23-Jan-23	01-Feb-23	-86435	-2736523	809	0.00	327.28	327.28	0	EOH, completed	E024	23-Jan-23	29-Jan-23	-86104	-2737215	800	0.00	284.75	284.75	0	EOH, completed	E069	27-Jan-23		-85313	-2740516	763	0.00	284.65	284.65	0	Drilling in progress	E027	01-Feb-23	21-Feb-23	-86331	-2737568	788	0.00	290.75	290.75	0	EOH, completed	E014	07-Feb-23		-86588	-2736213	811	0.00	106.10	106.10	0	Drilling in progress	E052	21-Feb-23		-86337	-2739349	775	0.00	3.55	3.55	0	Drilling in progress	E001D1			-87968	-2734368	350	508.00	0	0	0	Set-up
BH ID	Date Started	Date Completed				Drilling									From (m)	To (m)	Drilled Metres	Comment																																																																																																																																																																																																																																																																																																																																																																																																		
			Easting	Northing	Elevation																																																																																																																																																																																																																																																																																																																																																																																																															
E019	23-Aug-22	05-Sep-22	-86451	-2736870	804	0.00	32.42	32.42	0	Abandoned, stuck drill rods																																																																																																																																																																																																																																																																																																																																																																																																										
E019a	06-Sep-22	05-Oct-22	-86447	-2736870	804	0.00	323.77	323.77	0	EOH, completed																																																																																																																																																																																																																																																																																																																																																																																																										
E060	26-Aug-22	19-Oct-22	-85837	-2740292	774	0.00	206.72	206.72	0	EOH, completed																																																																																																																																																																																																																																																																																																																																																																																																										
E060_D1	23-Nov-22	28-Nov-22	-85837	-2740292	635	139.00	185.63	48.53	0	EOH, completed																																																																																																																																																																																																																																																																																																																																																																																																										
E062	26-Aug-22	02-Sep-22	-86184	-2740002	777	0.00	120.34	120.34	0	EOH, completed, extended to UCS1 for stratigraphy																																																																																																																																																																																																																																																																																																																																																																																																										
E062_D1	07-Sep-22	08-Sep-22	-86184	-2740002	759	18.30	34.92	16.62	0	Deflection completed, faulted UCS2																																																																																																																																																																																																																																																																																																																																																																																																										
E062_D2	08-Sep-22	10-Sep-22	-86184	-2740002	764	13.30	33.00	19.70	0	Deflection completed, faulted UCS2																																																																																																																																																																																																																																																																																																																																																																																																										
E058	12-Sep-22	05-Oct-22	-86127	-2740386	777	0.00	158.25	158.25	0	EOH, completed																																																																																																																																																																																																																																																																																																																																																																																																										
E035	07-Sep-22	15-Oct-22	-85930	-2737823	796	0.00	261.58	261.58	0	EOH, completed																																																																																																																																																																																																																																																																																																																																																																																																										
E028	07-Oct-22	24-Oct-22	-86784	-2736873	806	0.00	383.75	383.75	0	EOH, completed																																																																																																																																																																																																																																																																																																																																																																																																										
E004	14-Oct-22	15-Nov-22	-87547	-2734962	839	0.00	524.50	524.50	0	EOH, completed																																																																																																																																																																																																																																																																																																																																																																																																										
E004_D1	18-Nov-22	24-Nov-22	-87547	-2734962	382	457.00	518.75	81.75	0	Deflection completed																																																																																																																																																																																																																																																																																																																																																																																																										
E032	26-Oct-22	05-Dec-22	-87118	-2737304	801	0.00	413.75	413.75	0	EOH, completed																																																																																																																																																																																																																																																																																																																																																																																																										
E025	19-Oct-22	09-Nov-22	-85963	-2737487	796	0.00	267.58	267.58	0	EOH, completed																																																																																																																																																																																																																																																																																																																																																																																																										
E037	13-Oct-22	02-Nov-22	-86264	-2738274	776	0.00	282.45	282.45	0	EOH, completed																																																																																																																																																																																																																																																																																																																																																																																																										
E049	21-Oct-22	19-Nov-22	-85949	-2735599	771	0.00	322.75	322.75	0	EOH, completed, extended to UCS1 for stratigraphy																																																																																																																																																																																																																																																																																																																																																																																																										
E031	07-Nov-22	22-Nov-22	-87054	-2737306	802	0.00	423.22	423.22	0	EOH, completed																																																																																																																																																																																																																																																																																																																																																																																																										
E044	12-Nov-22	14-Dec-22	-86400	-2739001	775	0.00	263.73	263.73	0	EOH, completed																																																																																																																																																																																																																																																																																																																																																																																																										
E016	28-Nov-22	14-Dec-22	-87174	-2736679	815	0.00	325.68	454.68	0	EOH, completed																																																																																																																																																																																																																																																																																																																																																																																																										
E007	28-Nov-22	10-Dec-22	-87014	-2735562	826	0.00	422.80	422.80	0	EOH, completed																																																																																																																																																																																																																																																																																																																																																																																																										
E064	29-Nov-22	06-Dec-22	-84845	-2738001	750	0.00	166.40	166.40	0	EOH, completed																																																																																																																																																																																																																																																																																																																																																																																																										
E071	07-Dec-22	12-Dec-22	-85047	-2738333	750	0.00	188.80	188.80	0	EOH, completed																																																																																																																																																																																																																																																																																																																																																																																																										
E065	08-Dec-22	15-Dec-22	-85571	-2738436	764	0.00	239.75	239.75	0	EOH, completed																																																																																																																																																																																																																																																																																																																																																																																																										
E001	12-Jan-23	06-Feb-23	-87895	-2734357	858	0.00	554.75	554.75	0	EOH, completed																																																																																																																																																																																																																																																																																																																																																																																																										
E015	12-Jan-23	19-Jan-23	-86172	-2736461	802	0.00	298.72	298.72	0	EOH, completed																																																																																																																																																																																																																																																																																																																																																																																																										
E020	11-Jan-23	21-Jan-23	-86725	-2737285	798	0.00	350.75	350.75	0	EOH, completed																																																																																																																																																																																																																																																																																																																																																																																																										
E041	13-Jan-23	08-Feb-23	-86452	-2738758	770	0.00	258.77	258.77	0	EOH, completed																																																																																																																																																																																																																																																																																																																																																																																																										
E067	12-Jan-23	25-Jan-23	-85465	-2739534	762	0.00	306.45	306.45	0	EOH, completed																																																																																																																																																																																																																																																																																																																																																																																																										
E013	23-Jan-23	01-Feb-23	-86435	-2736523	809	0.00	327.28	327.28	0	EOH, completed																																																																																																																																																																																																																																																																																																																																																																																																										
E024	23-Jan-23	29-Jan-23	-86104	-2737215	800	0.00	284.75	284.75	0	EOH, completed																																																																																																																																																																																																																																																																																																																																																																																																										
E069	27-Jan-23		-85313	-2740516	763	0.00	284.65	284.65	0	Drilling in progress																																																																																																																																																																																																																																																																																																																																																																																																										
E027	01-Feb-23	21-Feb-23	-86331	-2737568	788	0.00	290.75	290.75	0	EOH, completed																																																																																																																																																																																																																																																																																																																																																																																																										
E014	07-Feb-23		-86588	-2736213	811	0.00	106.10	106.10	0	Drilling in progress																																																																																																																																																																																																																																																																																																																																																																																																										
E052	21-Feb-23		-86337	-2739349	775	0.00	3.55	3.55	0	Drilling in progress																																																																																																																																																																																																																																																																																																																																																																																																										
E001D1			-87968	-2734368	350	508.00	0	0	0	Set-up																																																																																																																																																																																																																																																																																																																																																																																																										
	If the exclusion of this information is justified on the basis that the information is not Material and this exclusion does not detract from the understanding of the report, the Competent Person should clearly explain why this is the case.	N/A																																																																																																																																																																																																																																																																																																																																																																																																																		
Data aggregation methods	<p>In reporting Exploration Results, weighting averaging techniques, maximum and/or minimum grade truncations (e.g. cutting of high grades) and cut-off grades are usually Material and should be stated.</p> <p>Where aggregate intercepts incorporate short lengths of high grade results and longer lengths of low grade results, the procedure used for such aggregation should be stated and some typical examples of such aggregations should be shown in detail.</p> <p>The assumptions used for any reporting of metal equivalent values should be clearly stated.</p>	<p>No updated Mineral Resource or Exploration Target has been completed utilising this new drilling data.</p> <p>No aggregation of data has been done at this stage.</p> <p>No metal equivalent has been reported.</p>																																																																																																																																																																																																																																																																																																																																																																																																																		
Relationship between mineralisation widths and intercept lengths	If the geometry of the mineralisation with respect to the drillhole angle is known, its nature should be reported. If it is not known and only the down hole lengths are reported, there should be a clear statement to this effect (e.g. 'down hole length, true width not known').	The intersection lengths stated are the downhole lengths. The drillholes are drilled at -90 degrees and the reef dip is expected to be approximately 12 degrees. Therefore, the difference should be minimal.																																																																																																																																																																																																																																																																																																																																																																																																																		
Diagrams	Appropriate maps and sections (with scales) and tabulations of intercepts should be included for any significant discovery being reported. These should include, but not be limited to a plan view of drillhole collar locations and appropriate sectional views.	A map of the drillhole positions is included in the press releases. A preliminary stratigraphic column has been completed for the project (previous press releases). A section has not been included as the larger structural blocks are still being determined with the drilling.																																																																																																																																																																																																																																																																																																																																																																																																																		
Balanced reporting	Where comprehensive reporting of all Exploration Results is not practicable, representative reporting of both low and high grades and/or widths should be practiced to avoid	Reef intersection depths for all the drillholes have been reported in the table below.																																																																																																																																																																																																																																																																																																																																																																																																																		

SECTION 2: REPORTING OF EXPLORATION RESULTS

Criteria	Explanation	Detail																																																																																																																																																																																																																																																																																																																																												
	misleading reporting of Exploration Results.	<table border="1"> <thead> <tr> <th colspan="4">Merensky Reef</th> <th colspan="4">UG2 Reef</th> </tr> <tr> <th>BH ID</th> <th>From (m)</th> <th>To (m)</th> <th>Intersection Width (m)</th> <th>Comment</th> <th>From (m)</th> <th>To (m)</th> <th>Intersection Width (m)</th> <th>Comment</th> </tr> </thead> <tbody> <tr> <td>E019</td> <td>20.25</td> <td>22.45</td> <td>2.20</td> <td>Highly weathered & friable, inconclusive</td> <td>-</td> <td>-</td> <td>-</td> <td>Hole stopped short</td> </tr> <tr> <td>E019a</td> <td>19.55</td> <td>22.35</td> <td>2.80</td> <td>Highly weathered & friable, inconclusive</td> <td>315.85</td> <td>316.61</td> <td>0.76</td> <td>Complete intersection</td> </tr> <tr> <td>E060</td> <td>-</td> <td>-</td> <td>-</td> <td>No MR expected - East of MR sub outcrop</td> <td>-</td> <td>-</td> <td>-</td> <td>Faulted?</td> </tr> <tr> <td>E060_D1</td> <td>-</td> <td>-</td> <td>-</td> <td>No MR expected - East of MR sub outcrop</td> <td>178.78</td> <td>179.29</td> <td>0.51</td> <td>Complete intersection</td> </tr> <tr> <td>E062</td> <td>-</td> <td>-</td> <td>-</td> <td>No MR expected - East of MR sub outcrop</td> <td>31.27</td> <td>32.30</td> <td>1.03</td> <td>Complete intersection, moderately weathered</td> </tr> <tr> <td>E062_D1</td> <td>-</td> <td>-</td> <td>-</td> <td>No MR expected - East of MR sub outcrop</td> <td>31.45</td> <td>32.27</td> <td>0.82</td> <td>Moderately weathered & faulted, incomplete intersection. Core loss</td> </tr> <tr> <td>E062_D2</td> <td>-</td> <td>-</td> <td>-</td> <td>No MR expected - East of MR sub outcrop</td> <td>31.16</td> <td>31.56</td> <td>0.40</td> <td>Moderately weathered & faulted, incomplete intersection. Core loss.</td> </tr> <tr> <td>E058</td> <td>-</td> <td>-</td> <td>-</td> <td>No MR expected - East of MR sub outcrop</td> <td>140.88</td> <td>141.29</td> <td>0.41</td> <td>Complete intersection</td> </tr> <tr> <td>E033</td> <td>-</td> <td>-</td> <td>-</td> <td>No MR expected - East of MR sub outcrop</td> <td>253.62</td> <td>254.25</td> <td>0.63</td> <td>Complete intersection</td> </tr> <tr> <td>E028</td> <td>66.70</td> <td>88.66</td> <td>1.96</td> <td>Complete intersection</td> <td>373.26</td> <td>373.79</td> <td>0.53</td> <td>Complete intersection</td> </tr> <tr> <td>E004</td> <td>213.77</td> <td>212.90</td> <td>2.13</td> <td>Complete intersection</td> <td>517.33</td> <td>517.67</td> <td>0.24</td> <td>Poorly developed UG2</td> </tr> <tr> <td>E004_D1</td> <td>-</td> <td>-</td> <td>-</td> <td>Deflection below MR</td> <td>515.83</td> <td>516.52</td> <td>0.69</td> <td>Poorly developed UG2</td> </tr> <tr> <td>E030</td> <td>143.00</td> <td>144.68</td> <td>1.68</td> <td>Complete intersection</td> <td>409.56</td> <td>410.07</td> <td>0.52</td> <td>Complete intersection</td> </tr> <tr> <td>E025</td> <td>-</td> <td>-</td> <td>-</td> <td>No MR expected - East of MR sub outcrop</td> <td>260.42</td> <td>261.32</td> <td>0.90</td> <td>Complete intersection</td> </tr> <tr> <td>E037</td> <td>-</td> <td>-</td> <td>-</td> <td>No MR expected - East of MR sub outcrop</td> <td>-</td> <td>-</td> <td>-</td> <td>Not present / Pothole</td> </tr> <tr> <td>E049</td> <td>-</td> <td>-</td> <td>-</td> <td>No MR expected - East of MR sub outcrop</td> <td>-</td> <td>-</td> <td>-</td> <td>Faulted</td> </tr> <tr> <td>E031</td> <td>122.40</td> <td>124.29</td> <td>1.89</td> <td>Complete intersection</td> <td>416.57</td> <td>417.19</td> <td>0.62</td> <td>Complete intersection</td> </tr> <tr> <td>E044</td> <td>-</td> <td>-</td> <td>-</td> <td>No MR expected - East of MR sub outcrop</td> <td>258.75</td> <td>259.42</td> <td>0.67</td> <td>Complete intersection</td> </tr> <tr> <td>E016</td> <td>-</td> <td>-</td> <td>-</td> <td>Faulted</td> <td>449.24</td> <td>450.01</td> <td>0.77</td> <td>Complete intersection</td> </tr> <tr> <td>E007</td> <td>100.38</td> <td>102.54</td> <td>2.16</td> <td>Complete intersection</td> <td>417.42</td> <td>418.12</td> <td>0.70</td> <td>Complete intersection</td> </tr> <tr> <td>E064</td> <td>-</td> <td>-</td> <td>-</td> <td>No MR expected - East of MR sub outcrop</td> <td>158.19</td> <td>157.05</td> <td>0.86</td> <td>Complete intersection</td> </tr> <tr> <td>E071</td> <td>-</td> <td>-</td> <td>-</td> <td>No MR expected - East of MR sub outcrop</td> <td>180.04</td> <td>180.73</td> <td>0.69</td> <td>Complete intersection</td> </tr> <tr> <td>E065</td> <td>-</td> <td>-</td> <td>-</td> <td>No MR expected - East of MR sub outcrop</td> <td>231.81</td> <td>232.50</td> <td>0.69</td> <td>Complete intersection</td> </tr> <tr> <td>E001</td> <td>259.78</td> <td>261.44</td> <td>1.66</td> <td>Complete intersection</td> <td>548.07</td> <td>549.21</td> <td>1.14</td> <td>Complete intersection</td> </tr> <tr> <td>E015</td> <td>-</td> <td>-</td> <td>-</td> <td>No MR expected - East of MR sub outcrop</td> <td>291.89</td> <td>292.63</td> <td>0.74</td> <td>Complete intersection</td> </tr> <tr> <td>E020</td> <td>54.20</td> <td>54.57</td> <td>0.37</td> <td>Faulted</td> <td>342.90</td> <td>343.58</td> <td>0.68</td> <td>Complete intersection</td> </tr> <tr> <td>E041</td> <td>-</td> <td>-</td> <td>-</td> <td>No MR expected - East of MR sub outcrop</td> <td>250.95</td> <td>251.60</td> <td>0.65</td> <td>Complete intersection</td> </tr> <tr> <td>E067</td> <td>-</td> <td>-</td> <td>-</td> <td>No MR expected - East of MR sub outcrop</td> <td>299.70</td> <td>300.20</td> <td>0.50</td> <td>Complete intersection</td> </tr> <tr> <td>E013</td> <td>12.00</td> <td>18.62</td> <td>6.62</td> <td>Highly weathered & friable, inconclusive (core loss & No striations)</td> <td>321.26</td> <td>321.76</td> <td>0.50</td> <td>Complete intersection</td> </tr> <tr> <td>E024</td> <td>-</td> <td>-</td> <td>-</td> <td>No MR expected - East of MR sub outcrop</td> <td>278.77</td> <td>279.26</td> <td>0.49</td> <td>Complete intersection</td> </tr> <tr> <td>E069</td> <td>-</td> <td>-</td> <td>-</td> <td>No MR expected - East of MR sub outcrop</td> <td>-</td> <td>-</td> <td>-</td> <td>UG2 expected ~ 240m</td> </tr> <tr> <td>E027</td> <td>-</td> <td>-</td> <td>-</td> <td>No MR expected - East of MR sub outcrop</td> <td>284.47</td> <td>285.04</td> <td>0.57</td> <td>Complete intersection</td> </tr> <tr> <td>E014</td> <td>37.28</td> <td>39.41</td> <td>2.13</td> <td>Complete intersection</td> <td>-</td> <td>-</td> <td>-</td> <td>UG2 expected ~ 327m</td> </tr> <tr> <td>E052</td> <td>-</td> <td>-</td> <td>-</td> <td>No MR expected - East of MR sub outcrop</td> <td>-</td> <td>-</td> <td>-</td> <td>UG2 expected ~ 126m</td> </tr> <tr> <td>E001D1</td> <td>-</td> <td>-</td> <td>-</td> <td>Deflection below MR</td> <td>-</td> <td>-</td> <td>-</td> <td>UG2 expected ~ 548m</td> </tr> </tbody> </table>	Merensky Reef				UG2 Reef				BH ID	From (m)	To (m)	Intersection Width (m)	Comment	From (m)	To (m)	Intersection Width (m)	Comment	E019	20.25	22.45	2.20	Highly weathered & friable, inconclusive	-	-	-	Hole stopped short	E019a	19.55	22.35	2.80	Highly weathered & friable, inconclusive	315.85	316.61	0.76	Complete intersection	E060	-	-	-	No MR expected - East of MR sub outcrop	-	-	-	Faulted?	E060_D1	-	-	-	No MR expected - East of MR sub outcrop	178.78	179.29	0.51	Complete intersection	E062	-	-	-	No MR expected - East of MR sub outcrop	31.27	32.30	1.03	Complete intersection, moderately weathered	E062_D1	-	-	-	No MR expected - East of MR sub outcrop	31.45	32.27	0.82	Moderately weathered & faulted, incomplete intersection. Core loss	E062_D2	-	-	-	No MR expected - East of MR sub outcrop	31.16	31.56	0.40	Moderately weathered & faulted, incomplete intersection. Core loss.	E058	-	-	-	No MR expected - East of MR sub outcrop	140.88	141.29	0.41	Complete intersection	E033	-	-	-	No MR expected - East of MR sub outcrop	253.62	254.25	0.63	Complete intersection	E028	66.70	88.66	1.96	Complete intersection	373.26	373.79	0.53	Complete intersection	E004	213.77	212.90	2.13	Complete intersection	517.33	517.67	0.24	Poorly developed UG2	E004_D1	-	-	-	Deflection below MR	515.83	516.52	0.69	Poorly developed UG2	E030	143.00	144.68	1.68	Complete intersection	409.56	410.07	0.52	Complete intersection	E025	-	-	-	No MR expected - East of MR sub outcrop	260.42	261.32	0.90	Complete intersection	E037	-	-	-	No MR expected - East of MR sub outcrop	-	-	-	Not present / Pothole	E049	-	-	-	No MR expected - East of MR sub outcrop	-	-	-	Faulted	E031	122.40	124.29	1.89	Complete intersection	416.57	417.19	0.62	Complete intersection	E044	-	-	-	No MR expected - East of MR sub outcrop	258.75	259.42	0.67	Complete intersection	E016	-	-	-	Faulted	449.24	450.01	0.77	Complete intersection	E007	100.38	102.54	2.16	Complete intersection	417.42	418.12	0.70	Complete intersection	E064	-	-	-	No MR expected - East of MR sub outcrop	158.19	157.05	0.86	Complete intersection	E071	-	-	-	No MR expected - East of MR sub outcrop	180.04	180.73	0.69	Complete intersection	E065	-	-	-	No MR expected - East of MR sub outcrop	231.81	232.50	0.69	Complete intersection	E001	259.78	261.44	1.66	Complete intersection	548.07	549.21	1.14	Complete intersection	E015	-	-	-	No MR expected - East of MR sub outcrop	291.89	292.63	0.74	Complete intersection	E020	54.20	54.57	0.37	Faulted	342.90	343.58	0.68	Complete intersection	E041	-	-	-	No MR expected - East of MR sub outcrop	250.95	251.60	0.65	Complete intersection	E067	-	-	-	No MR expected - East of MR sub outcrop	299.70	300.20	0.50	Complete intersection	E013	12.00	18.62	6.62	Highly weathered & friable, inconclusive (core loss & No striations)	321.26	321.76	0.50	Complete intersection	E024	-	-	-	No MR expected - East of MR sub outcrop	278.77	279.26	0.49	Complete intersection	E069	-	-	-	No MR expected - East of MR sub outcrop	-	-	-	UG2 expected ~ 240m	E027	-	-	-	No MR expected - East of MR sub outcrop	284.47	285.04	0.57	Complete intersection	E014	37.28	39.41	2.13	Complete intersection	-	-	-	UG2 expected ~ 327m	E052	-	-	-	No MR expected - East of MR sub outcrop	-	-	-	UG2 expected ~ 126m	E001D1	-	-	-	Deflection below MR	-	-	-	UG2 expected ~ 548m
Merensky Reef				UG2 Reef																																																																																																																																																																																																																																																																																																																																										
BH ID	From (m)	To (m)	Intersection Width (m)	Comment	From (m)	To (m)	Intersection Width (m)	Comment																																																																																																																																																																																																																																																																																																																																						
E019	20.25	22.45	2.20	Highly weathered & friable, inconclusive	-	-	-	Hole stopped short																																																																																																																																																																																																																																																																																																																																						
E019a	19.55	22.35	2.80	Highly weathered & friable, inconclusive	315.85	316.61	0.76	Complete intersection																																																																																																																																																																																																																																																																																																																																						
E060	-	-	-	No MR expected - East of MR sub outcrop	-	-	-	Faulted?																																																																																																																																																																																																																																																																																																																																						
E060_D1	-	-	-	No MR expected - East of MR sub outcrop	178.78	179.29	0.51	Complete intersection																																																																																																																																																																																																																																																																																																																																						
E062	-	-	-	No MR expected - East of MR sub outcrop	31.27	32.30	1.03	Complete intersection, moderately weathered																																																																																																																																																																																																																																																																																																																																						
E062_D1	-	-	-	No MR expected - East of MR sub outcrop	31.45	32.27	0.82	Moderately weathered & faulted, incomplete intersection. Core loss																																																																																																																																																																																																																																																																																																																																						
E062_D2	-	-	-	No MR expected - East of MR sub outcrop	31.16	31.56	0.40	Moderately weathered & faulted, incomplete intersection. Core loss.																																																																																																																																																																																																																																																																																																																																						
E058	-	-	-	No MR expected - East of MR sub outcrop	140.88	141.29	0.41	Complete intersection																																																																																																																																																																																																																																																																																																																																						
E033	-	-	-	No MR expected - East of MR sub outcrop	253.62	254.25	0.63	Complete intersection																																																																																																																																																																																																																																																																																																																																						
E028	66.70	88.66	1.96	Complete intersection	373.26	373.79	0.53	Complete intersection																																																																																																																																																																																																																																																																																																																																						
E004	213.77	212.90	2.13	Complete intersection	517.33	517.67	0.24	Poorly developed UG2																																																																																																																																																																																																																																																																																																																																						
E004_D1	-	-	-	Deflection below MR	515.83	516.52	0.69	Poorly developed UG2																																																																																																																																																																																																																																																																																																																																						
E030	143.00	144.68	1.68	Complete intersection	409.56	410.07	0.52	Complete intersection																																																																																																																																																																																																																																																																																																																																						
E025	-	-	-	No MR expected - East of MR sub outcrop	260.42	261.32	0.90	Complete intersection																																																																																																																																																																																																																																																																																																																																						
E037	-	-	-	No MR expected - East of MR sub outcrop	-	-	-	Not present / Pothole																																																																																																																																																																																																																																																																																																																																						
E049	-	-	-	No MR expected - East of MR sub outcrop	-	-	-	Faulted																																																																																																																																																																																																																																																																																																																																						
E031	122.40	124.29	1.89	Complete intersection	416.57	417.19	0.62	Complete intersection																																																																																																																																																																																																																																																																																																																																						
E044	-	-	-	No MR expected - East of MR sub outcrop	258.75	259.42	0.67	Complete intersection																																																																																																																																																																																																																																																																																																																																						
E016	-	-	-	Faulted	449.24	450.01	0.77	Complete intersection																																																																																																																																																																																																																																																																																																																																						
E007	100.38	102.54	2.16	Complete intersection	417.42	418.12	0.70	Complete intersection																																																																																																																																																																																																																																																																																																																																						
E064	-	-	-	No MR expected - East of MR sub outcrop	158.19	157.05	0.86	Complete intersection																																																																																																																																																																																																																																																																																																																																						
E071	-	-	-	No MR expected - East of MR sub outcrop	180.04	180.73	0.69	Complete intersection																																																																																																																																																																																																																																																																																																																																						
E065	-	-	-	No MR expected - East of MR sub outcrop	231.81	232.50	0.69	Complete intersection																																																																																																																																																																																																																																																																																																																																						
E001	259.78	261.44	1.66	Complete intersection	548.07	549.21	1.14	Complete intersection																																																																																																																																																																																																																																																																																																																																						
E015	-	-	-	No MR expected - East of MR sub outcrop	291.89	292.63	0.74	Complete intersection																																																																																																																																																																																																																																																																																																																																						
E020	54.20	54.57	0.37	Faulted	342.90	343.58	0.68	Complete intersection																																																																																																																																																																																																																																																																																																																																						
E041	-	-	-	No MR expected - East of MR sub outcrop	250.95	251.60	0.65	Complete intersection																																																																																																																																																																																																																																																																																																																																						
E067	-	-	-	No MR expected - East of MR sub outcrop	299.70	300.20	0.50	Complete intersection																																																																																																																																																																																																																																																																																																																																						
E013	12.00	18.62	6.62	Highly weathered & friable, inconclusive (core loss & No striations)	321.26	321.76	0.50	Complete intersection																																																																																																																																																																																																																																																																																																																																						
E024	-	-	-	No MR expected - East of MR sub outcrop	278.77	279.26	0.49	Complete intersection																																																																																																																																																																																																																																																																																																																																						
E069	-	-	-	No MR expected - East of MR sub outcrop	-	-	-	UG2 expected ~ 240m																																																																																																																																																																																																																																																																																																																																						
E027	-	-	-	No MR expected - East of MR sub outcrop	284.47	285.04	0.57	Complete intersection																																																																																																																																																																																																																																																																																																																																						
E014	37.28	39.41	2.13	Complete intersection	-	-	-	UG2 expected ~ 327m																																																																																																																																																																																																																																																																																																																																						
E052	-	-	-	No MR expected - East of MR sub outcrop	-	-	-	UG2 expected ~ 126m																																																																																																																																																																																																																																																																																																																																						
E001D1	-	-	-	Deflection below MR	-	-	-	UG2 expected ~ 548m																																																																																																																																																																																																																																																																																																																																						
Other substantive exploration data	Other exploration data, if meaningful and material, should be reported including (but not limited to): geological observations; geophysical survey results; geochemical survey results; bulk samples – size and method of treatment; metallurgical test results; bulk density, groundwater, geotechnical and rock characteristics; potential deleterious or contaminating substances.	<p>A high-definition helicopter borne Total Magnetic Field (TMF) gradient and gamma-ray spectrometry survey was completed by New Resolution Geophysics (Pty) Ltd (NRG) in January of 2022 which highlighted the major structural features that could be expected.</p> <p>The total line kilometres flown was 1,425 lkm over the farms Eerstegeluk 322 KT and Nooitverwacht 324 KT with the survey being flown at a height between 25 m and 80 m due to the topography and residential areas with an average height of approximately 35 m to 40 m and a line spacing of 50 m.</p> 																																																																																																																																																																																																																																																																																																																																												
Further work	The nature and scale of planned further work (e.g. tests for lateral extensions or depth extensions or large-scale step-out drilling).	This is the start of the drilling programme, and the extent of the drilling programme is shown in previous press releases. The total planned drilling meters for phase 1 is approximately 25,000 m.																																																																																																																																																																																																																																																																																																																																												

SECTION 2: REPORTING OF EXPLORATION RESULTS

Criteria	Explanation	Detail
	<p>Diagrams clearly highlighting the areas of possible extensions, including the main geological interpretations and future drilling areas, provided this information is not commercially sensitive.</p>	 <p>The map displays a geological site with various exploration phases and inferred boundaries. Key features include:</p> <ul style="list-style-type: none"> Phase 1: Indicated by yellow dots. Phase 2: Indicated by green dots. Historic Drilling: Indicated by black dots. Inferred Boundary: A green line outlining the site's extent. Inferred UG2 Reef above 500m: A blue shaded area. Exploration Target UG2 Reef above 500m: A purple shaded area. Possible additional UG2 reef: A yellow shaded area on the right side of the map. <p>The map includes a scale bar for 2,500 meters and a north arrow. Grid coordinates are provided along the edges: 2735000 N and 2740000 N for latitude, and 400000 E and 400500 E for longitude.</p>